

# Crew Boat “Abou Seif”



## General

The vessel is built of steel hull and aluminum superstructure, and is designed for operations in coastal waters and on the open sea. She is capable of remaining at sea in wind force 8 (34 to 40 knots), sea state 6.

Flag	Egypt
Port of registry	Port Said
Place of built	Brightlingsea, United Kingdom , 1986
Rebuilt, repowered	2010
Dimensions	24 x 5.5 x 2.6 m ( max draft frd 1.48m, aft 1.61m )
Passenger Capacity	35 Pax in air-conditioned accommodation
Cargo capacity	5 tons in cargo hold dimensions 5 x 6 2.5m
Clear deck area	6 x 5 m
Crew accommodation	9 fully air-conditioned

## Speed and performance

Engines (rpm)	Fuel Consumption (liters/hr)	Speed (knots)		Endurance (hours)	Range (n/miles)
		½ load	full load		
2x1500	354.1	25.3	22.5	31	668.0
2x1400	326.8	23.9	20.1	33.6	676.6
2x1200	204.3	17.7	15.8	53.8	850.8
2x1000	127.1	14.2	13.6	86.5	1177.2

## Navigation / Communication

Wheelhouse forward and aft consoles.

1 Arpa Radar 72 miles, 1 mini Arpa Radar 48 miles , Gyro Compass, 2 GPS/Chart Plotters, 3VHF's, 1 SSB, Depth Sounder, Wind Speed Indicator.

## Machinery

Main Engines	2 x Detroit Diesels type 16-149 TA's, each 1,360 BHP Total 2,720 BHP , 2 fixed pitch propellers.
Generators	2 x G.M. Type 2-71 - 440 V , 60 hz , 3 ph .

---

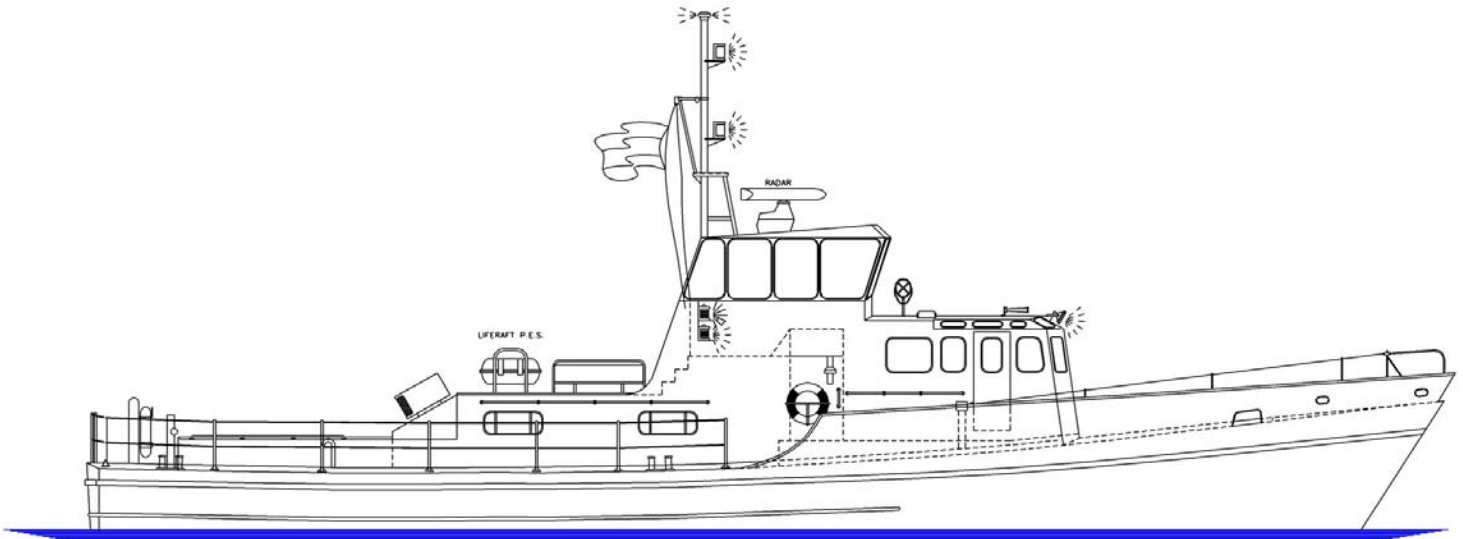
**Owners: Mediterranean Offshore Marine Service Co. (MOSCO)**

**8 Palestine Street, Port Said 42111, Egypt.**

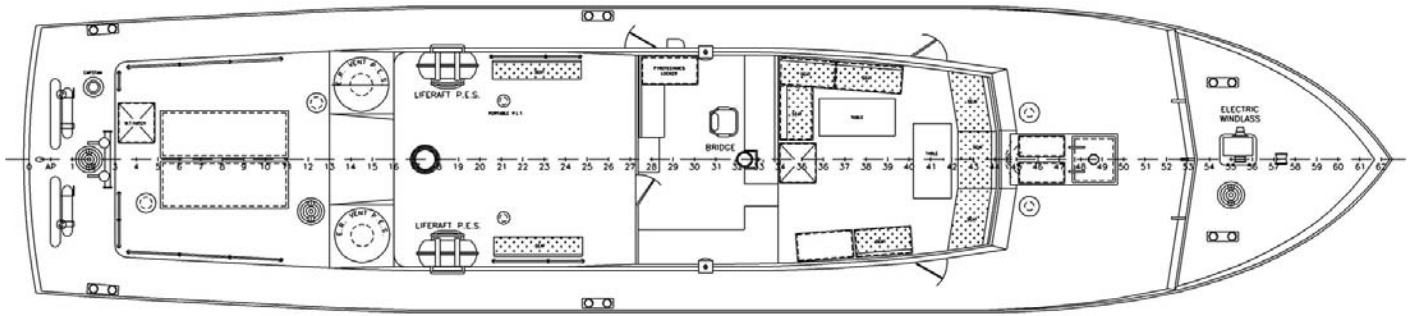
Tel : +2066 322 8538 , Fax +2066 322 8830

<http://www.mosco-offshore.com>

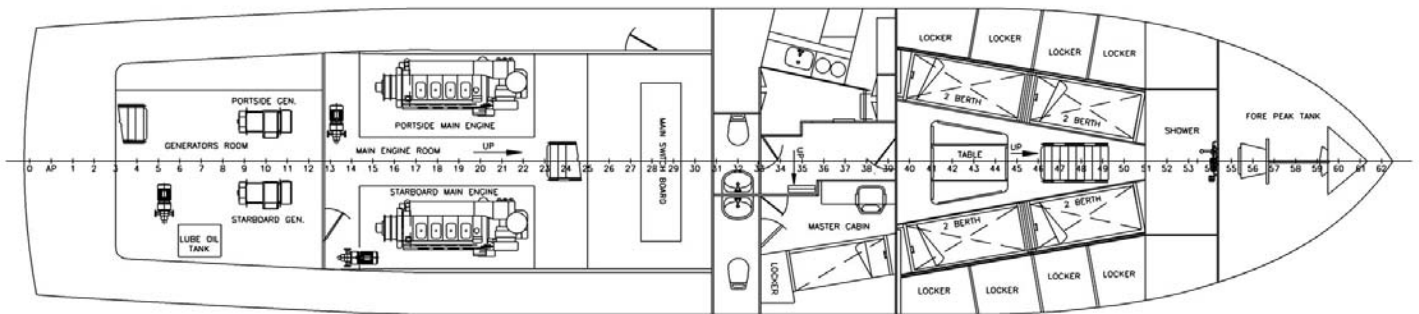
# ABOU SEIF



SIDE VIEW



MAIN DECK



UNDER DECK